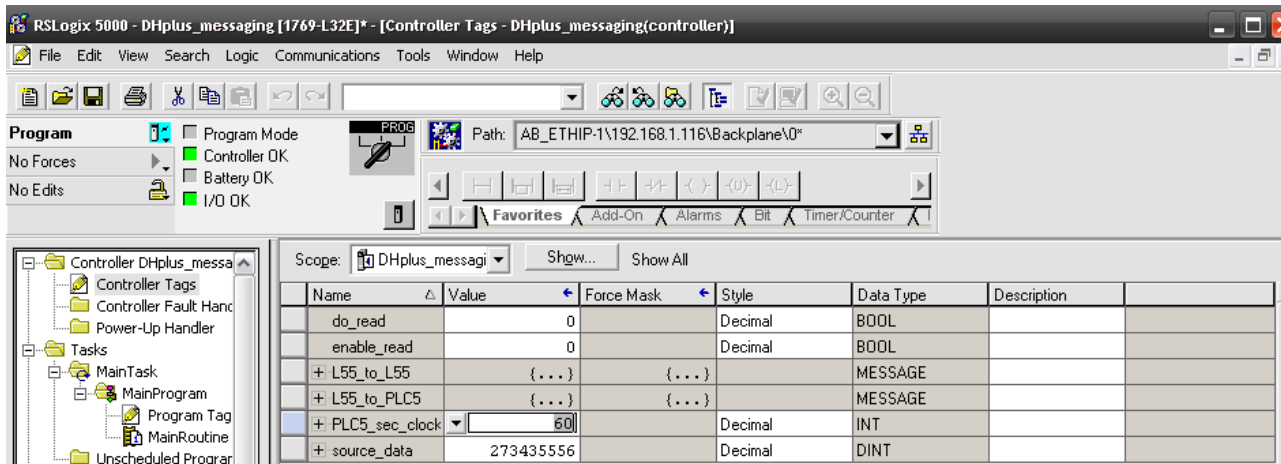


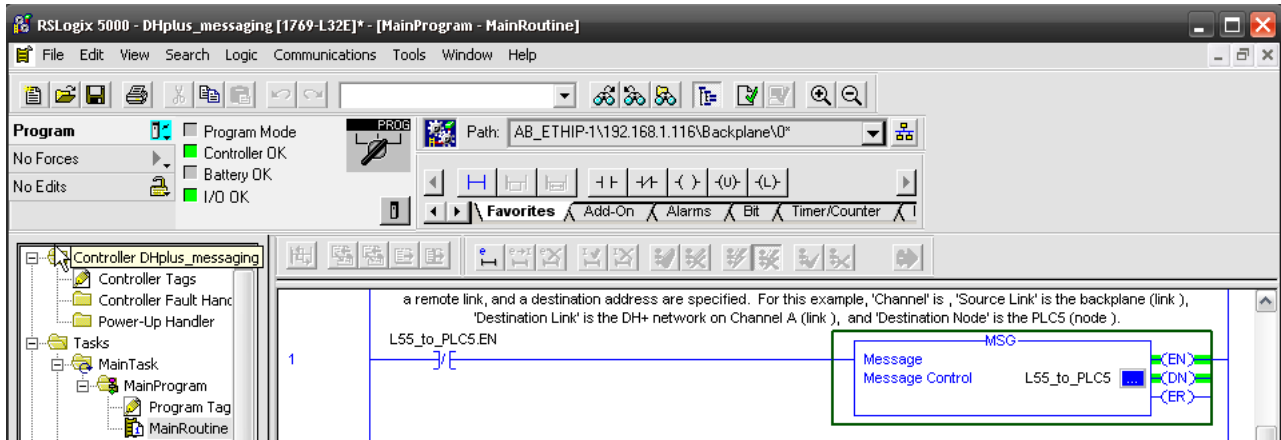
GW1000-ABEIP: CompactLogix/ControlLogix/MicroLogix Ethernet/IP to DH+ Setup

This application note provides an example of setting up of a MSG block from CompactLogix Ethernet/IP to DH+ using node 5 (PLC5/20) through GW1000-ABEIP at 192.168.1.112

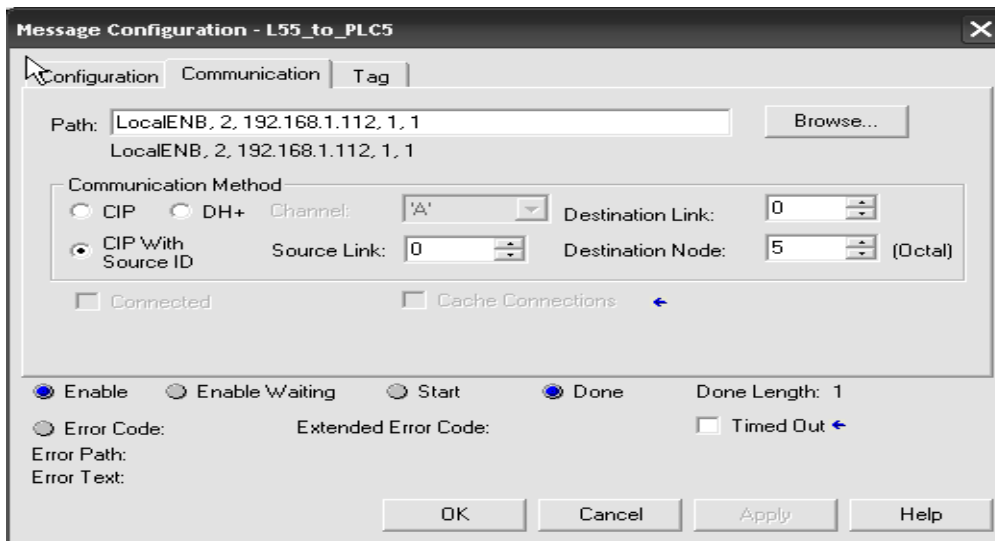
Additional information is available in the GW1000 User Manual at www.datalink-gateways.com or contact our Technical Support at (360) 306-5878 / (866) 709-6390.



Name	Value	Force Mask	Style	Data Type	Description
do_read	0		Decimal	BOOL	
enable_read	0		Decimal	BOOL	
+ L55_to_L55	{...}	{...}		MESSAGE	
+ L55_to_PLC5	{...}	{...}		MESSAGE	
+ PLC5_sec_clock	60		Decimal	INT	
+ source_data	273435556		Decimal	DINT	



a remote link, and a destination address are specified. For this example, 'Channel' is the backplane (link), 'Destination Link' is the DH+ network on Channel A (link), and 'Destination Node' is the PLC5 (node 5).



The path is the most important.

LocalENB, 2, 192.168.1.112, 1, 1

Where:

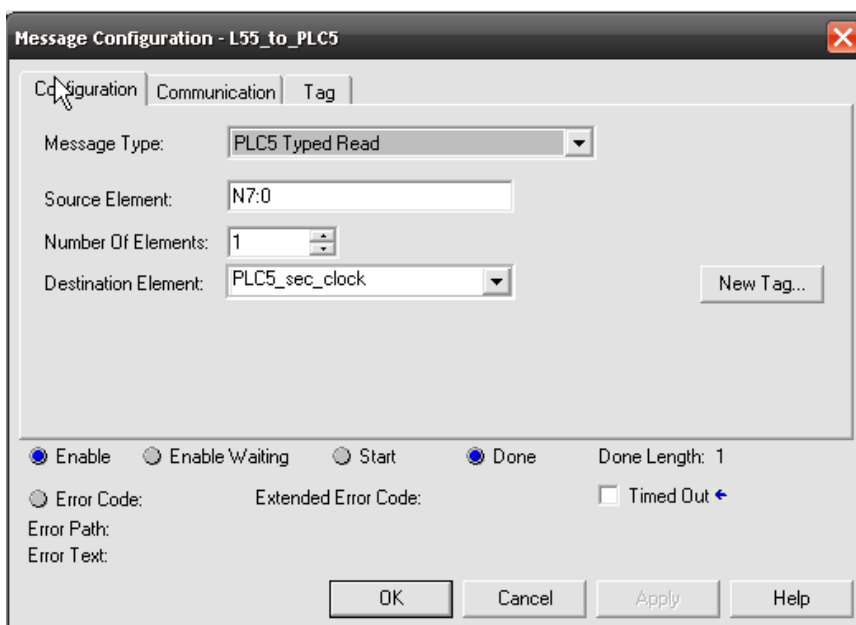
LocalENB = Backplane

2 = EIP

192.168.1.112 = IP address of the GW1000-ABEIP

1 = Backplane

1 = Slot Number of the Ethernet Module (For CompactLogix L32E it is 1)



References :

http://literature.rockwellautomation.com/idc/groups/literature/documents/rm/1756-rm003_-en-p.pdf

2 Datalink Technologies Gateways, Inc. www.datalink-gateways.com (360) 306-5878 / (866) 709-6390

Chapter 4	
Introduction	143
Message (MSG)	144
MSG Error Codes	152
Error Codes	152
Extended Error Codes	154
PLC and SLC Error Codes (ERR)	156
Block-Transfer Error Codes	158
Specify the Configuration Details	159
Specify CIP Data Table Read and Write messages	160
Reconfigure an I/O module	161
Specify CIP Generic messages	162
Specify PLC-5 messages	163
Specify SLC messages	165
Specify block-transfer messages	165
Specify PLC-3 messages	166
Specify PLC-2 messages	167
MSG Configuration Examples	168
Specify the Communication Details	169