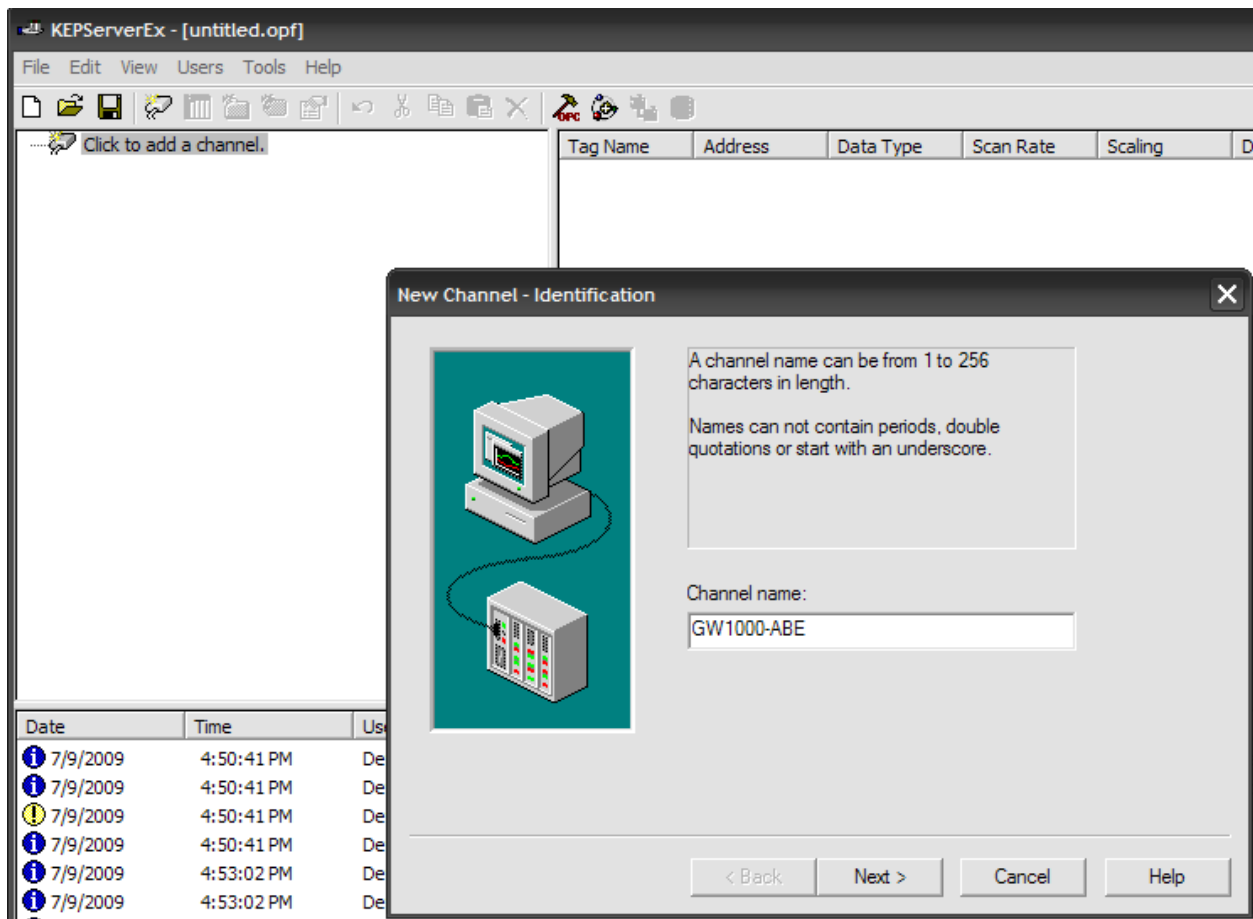
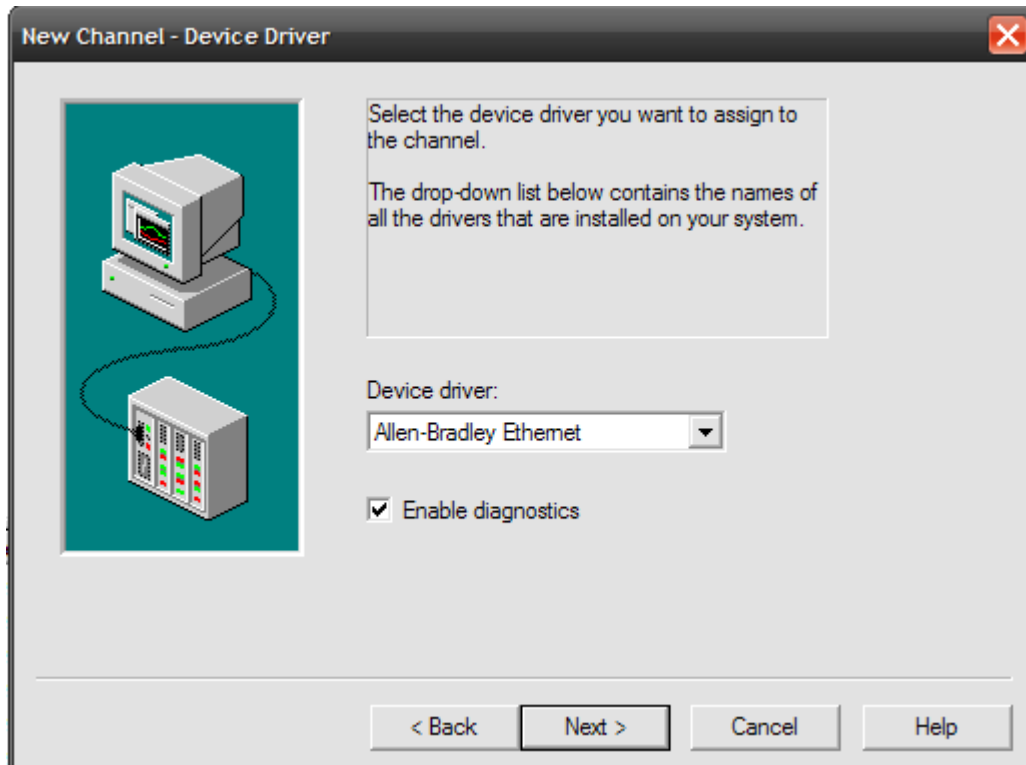


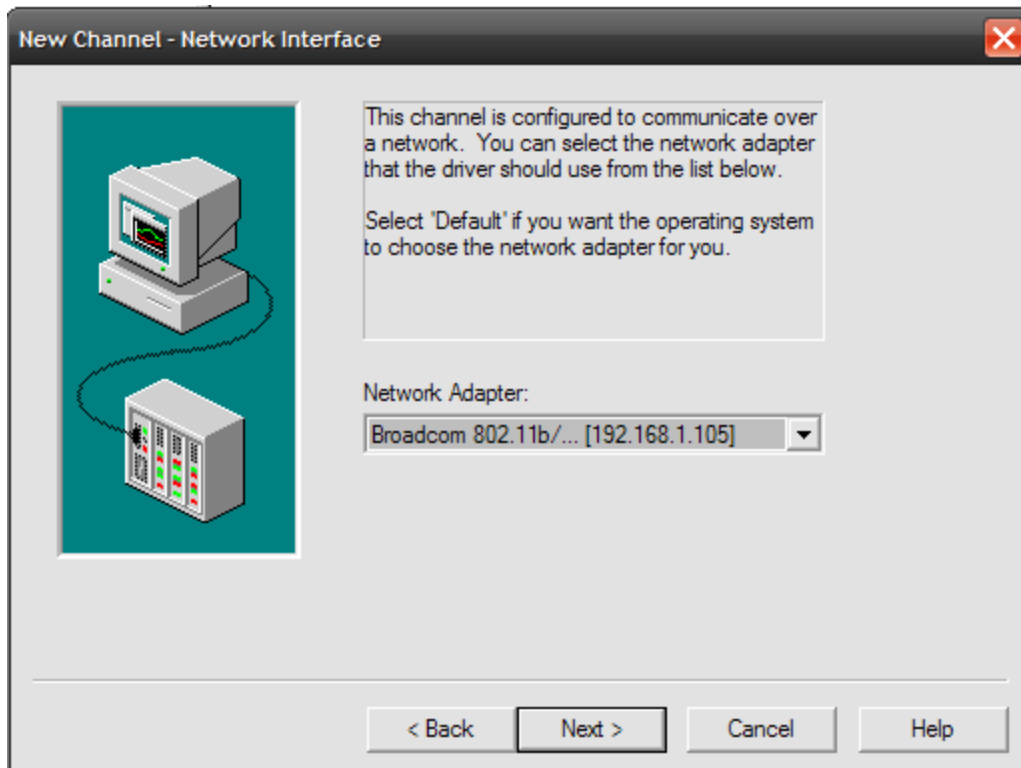
GW1000-ABEIP: Kepserver AB Ethernet DH+ Application Note

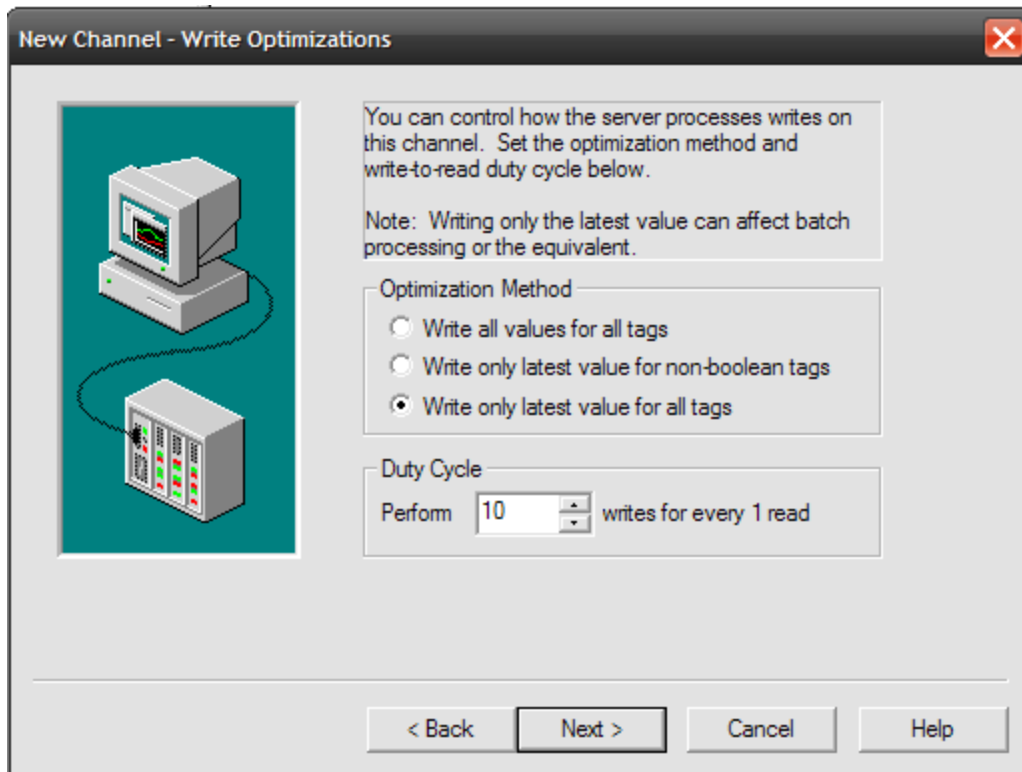
The screen shots examples show to setup multiple Kepserver Workstations via **AB Ethernet Driver** to program/poll multiple DH+ nodes.

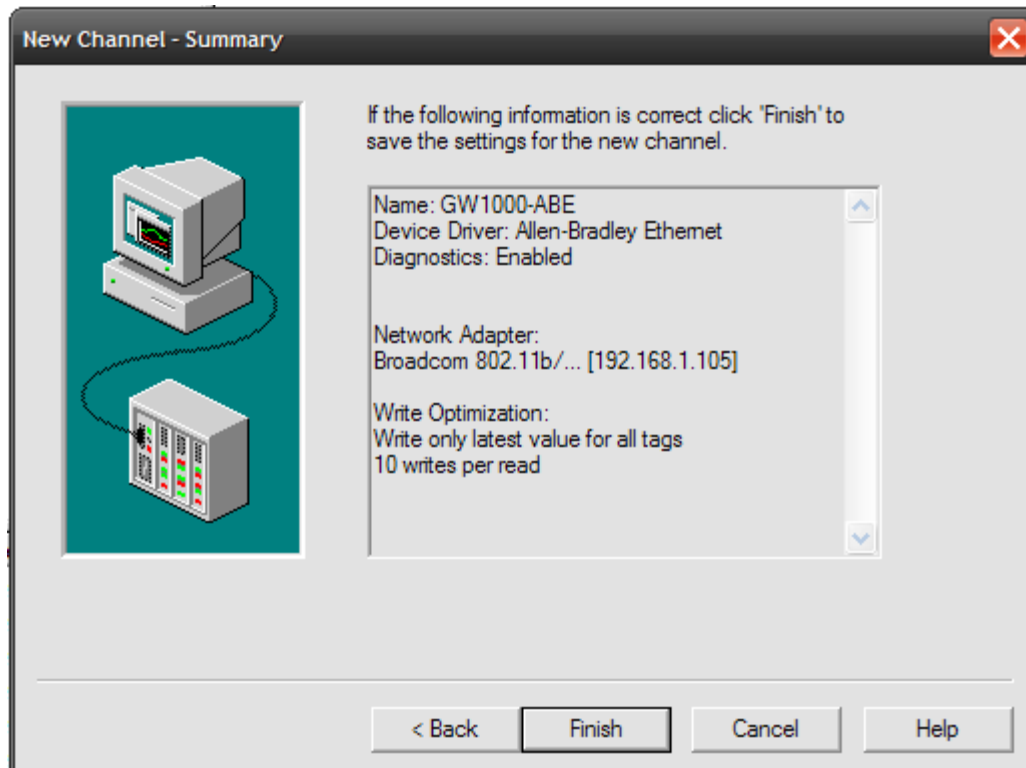
Please also refer to our GW1000 User's Manual on the CD for setup assistance or contact our Tech Support at Tel: (360) 306-5878 / (866) 709-3690 or www.datalink-gateways.com

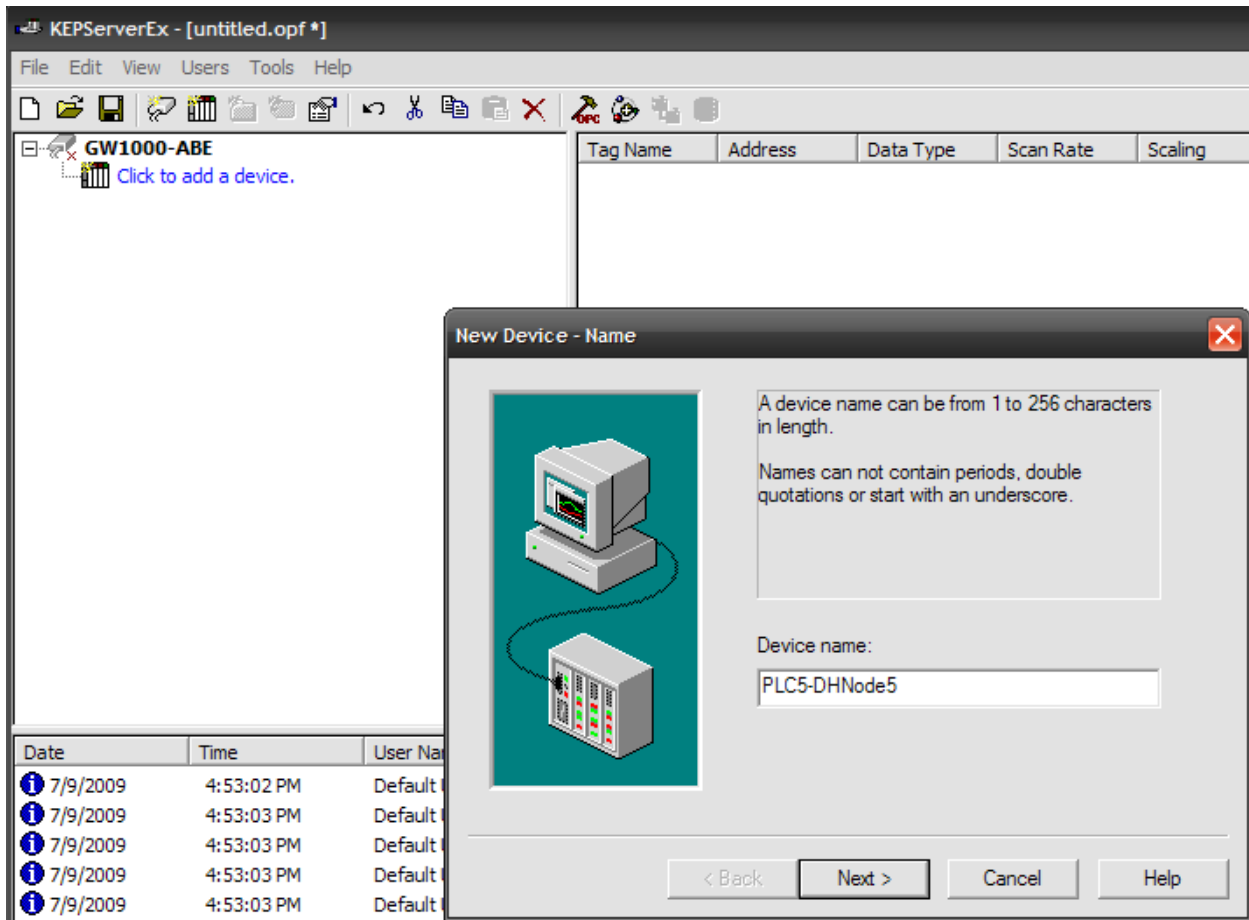












KEPServerEx - [untitled.opf *]

File Edit View Users Tools Help

GW1000-ABE
Click to add a device.

Tag Name	Address	Data Type	Scan Rate	Scaling
----------	---------	-----------	-----------	---------

New Device - Name

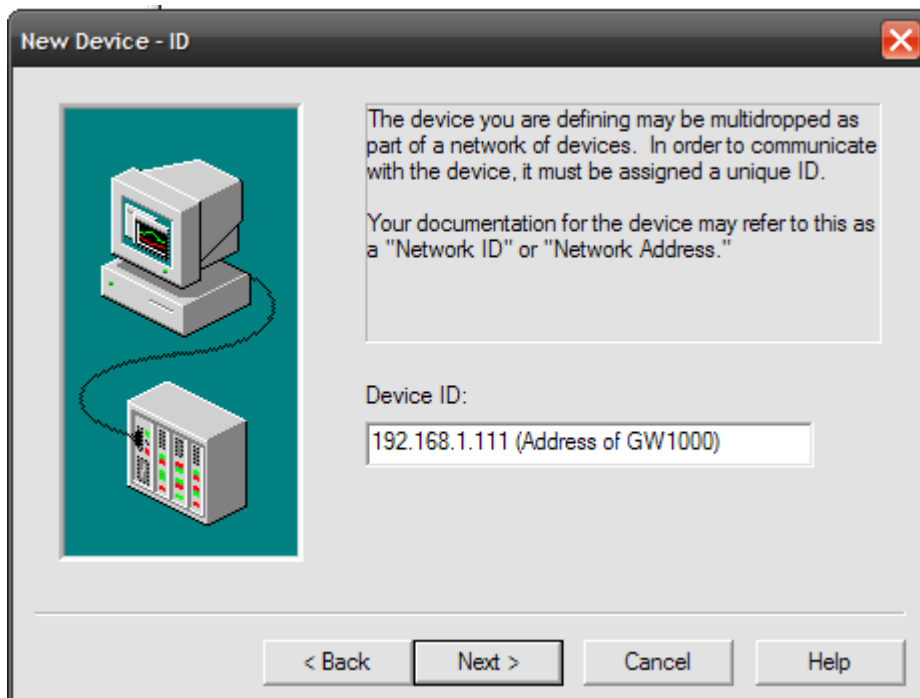
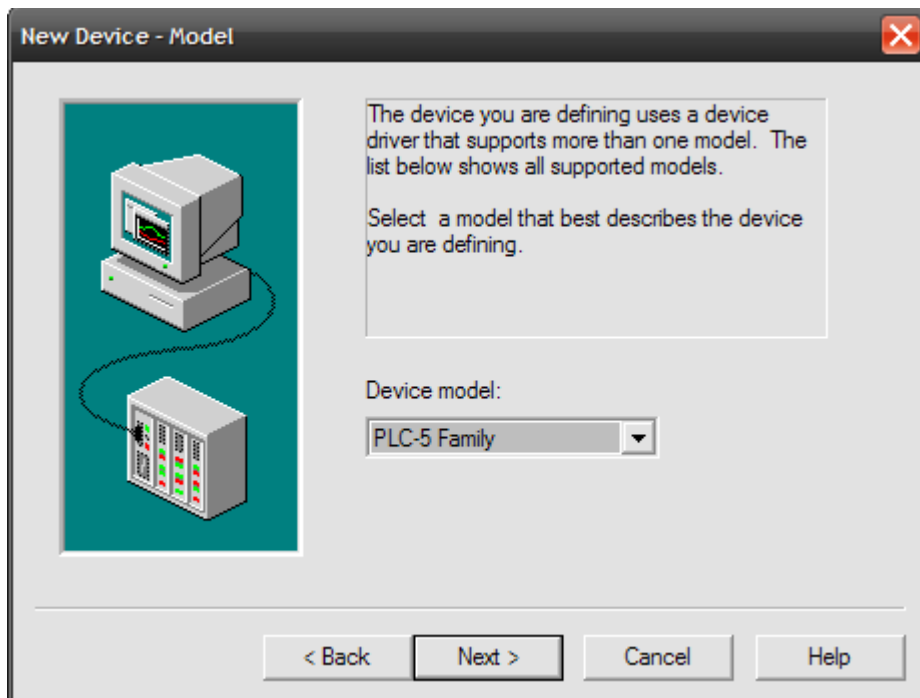
A device name can be from 1 to 256 characters in length.
Names can not contain periods, double quotations or start with an underscore.

Device name:

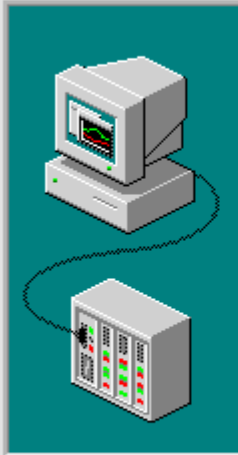
PLC5-DHNode5

< Back Next > Cancel Help

Date	Time	User Name
7/9/2009	4:53:02 PM	Default
7/9/2009	4:53:03 PM	Default
7/9/2009	4:53:03 PM	Default
7/9/2009	4:53:03 PM	Default
7/9/2009	4:53:03 PM	Default



New Device - ID ✖

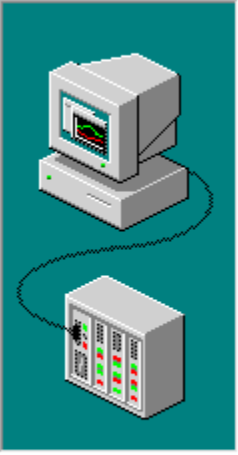


The device you are defining may be multidropped as part of a network of devices. In order to communicate with the device, it must be assigned a unique ID.

Your documentation for the device may refer to this as a "Network ID" or "Network Address."

Device ID:

New Device - Timing ✖



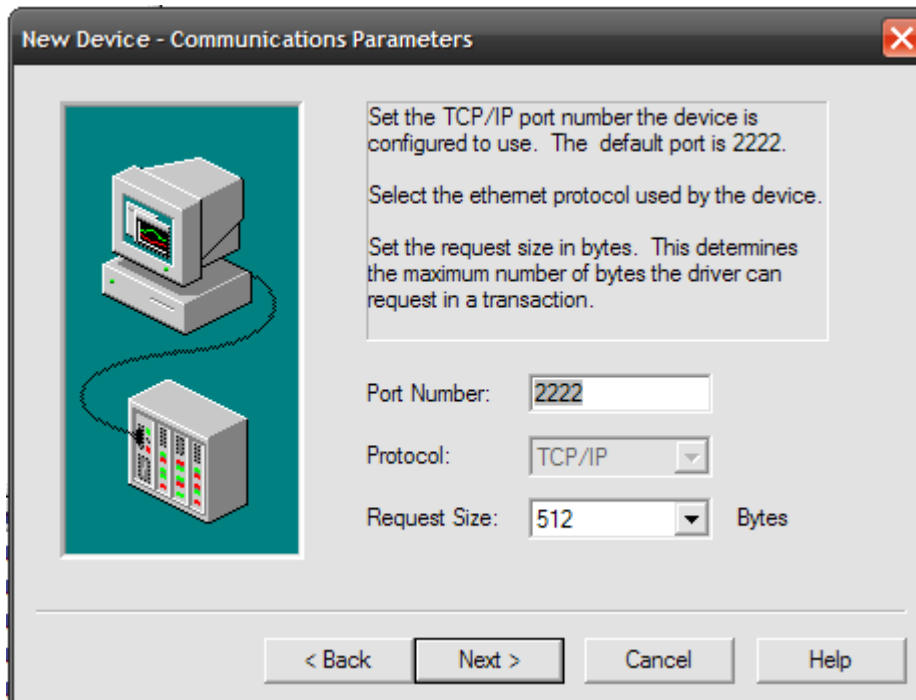
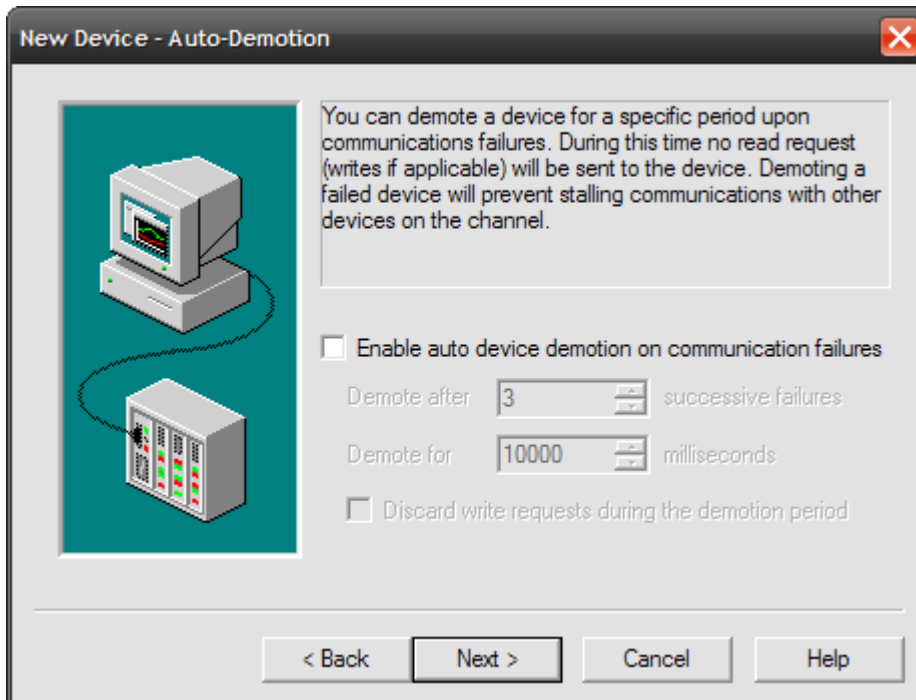
The device you are defining has communications timing parameters that you can configure.

Connect timeout: seconds

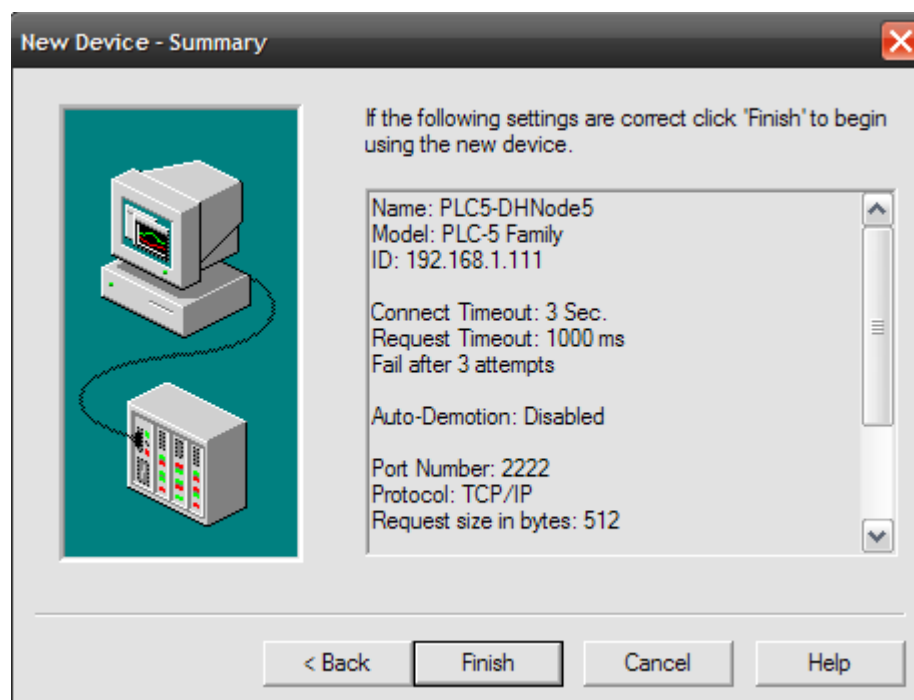
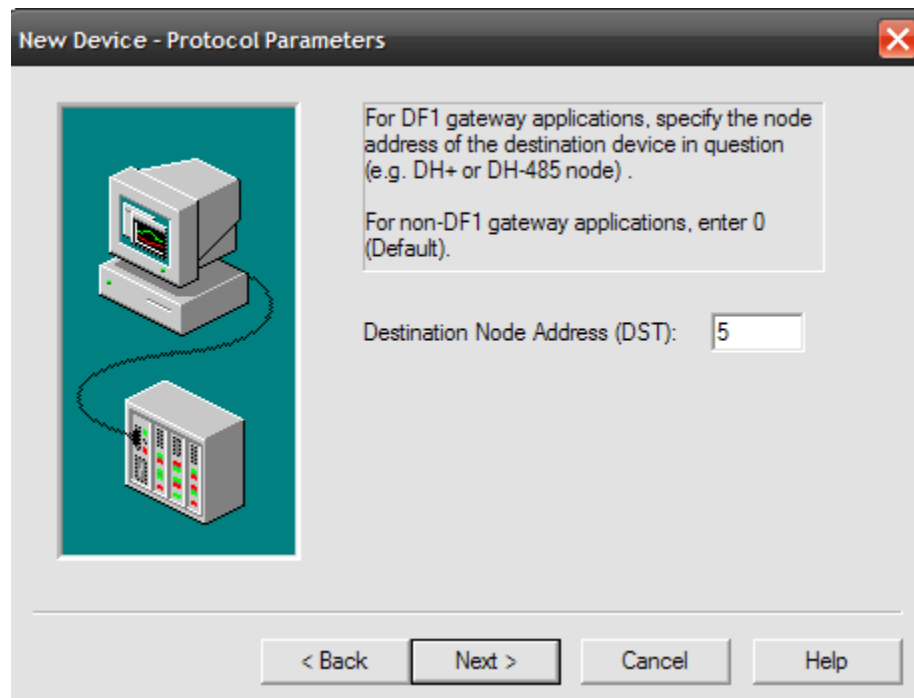
Request timeout: milliseconds

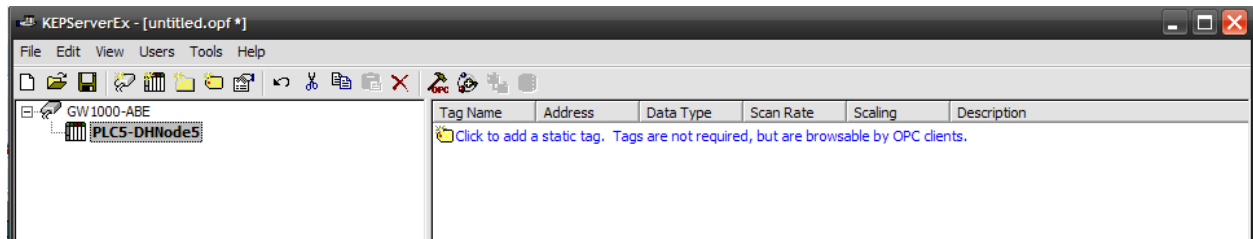
Fail after successive timeouts

Inter-request delay: milliseconds



NOTE: Request size default value is 512. If you experience DH+ communication errors, this can be fixed by setting the Request Size value to 128.





Next step: Add tags for that Device.