

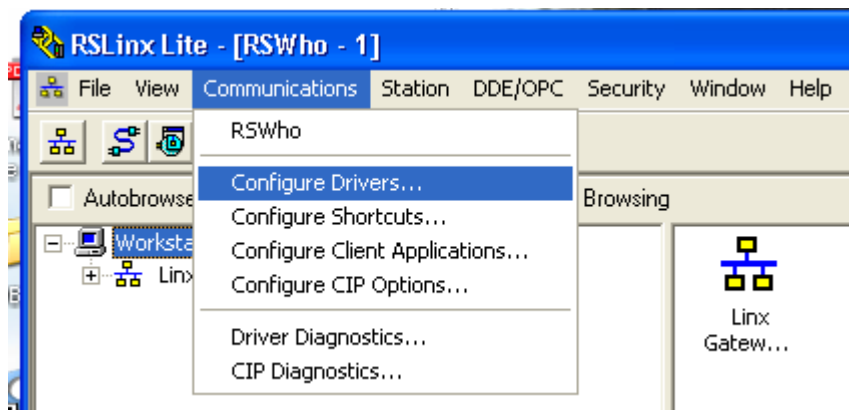


## GW1000-DHP1: RSLINX Serial DF1 to DH+ Setup

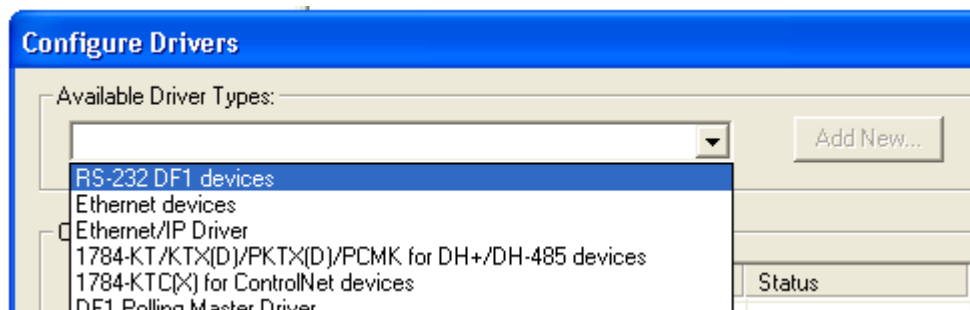
This application note provides an example of setting up RSLINX/LOGIX via Serial DF1 Driver (1770-KF2) to DH+.

Additional information is available in the GW1000 User Manual at [www.datalink-gateways.com](http://www.datalink-gateways.com) or contact our Technical Support at (360) 306-5878 / (866) 709-6390.

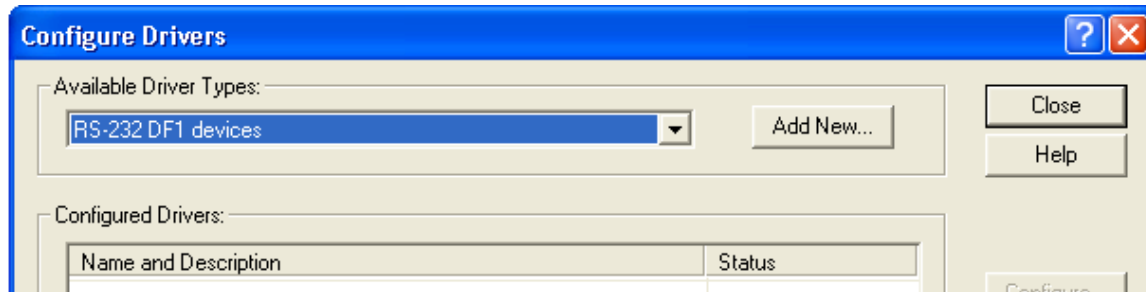
### Start RSLINX and go Configure Drivers



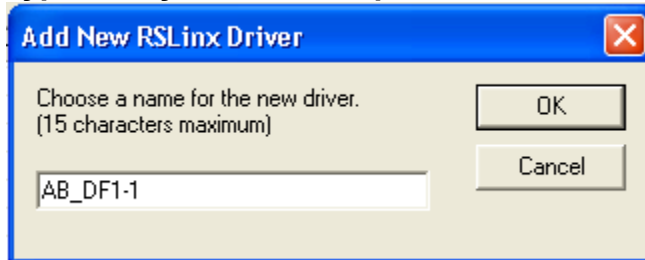
### Select RS-232 Devices from the menu pull down.



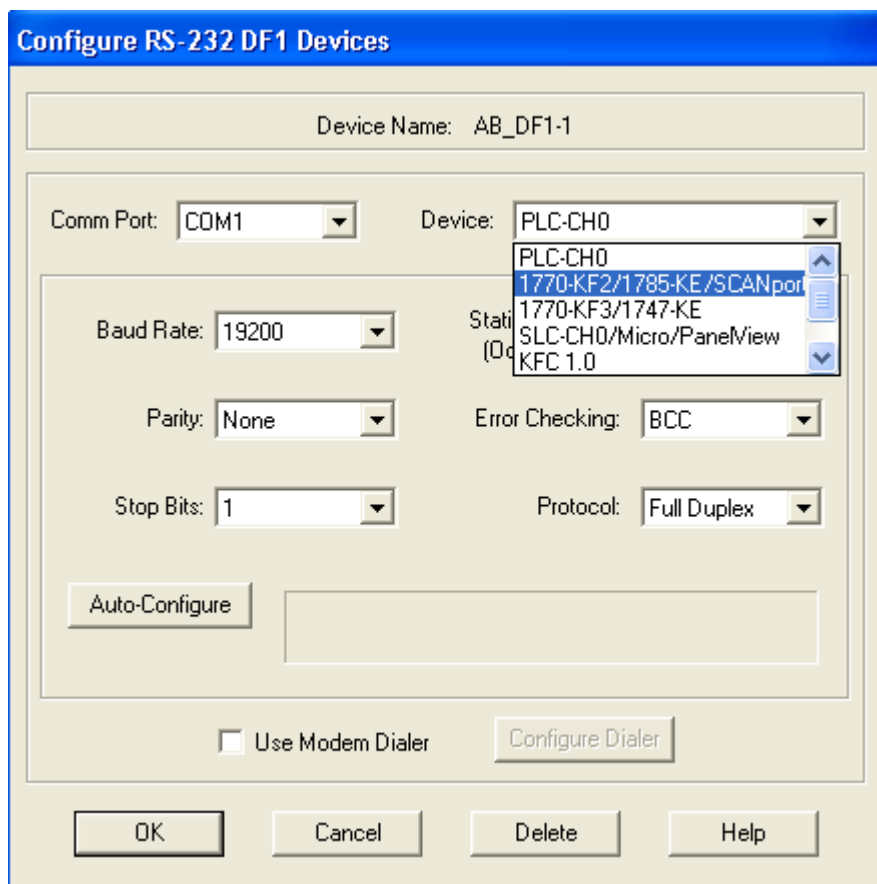
### Click on Add New



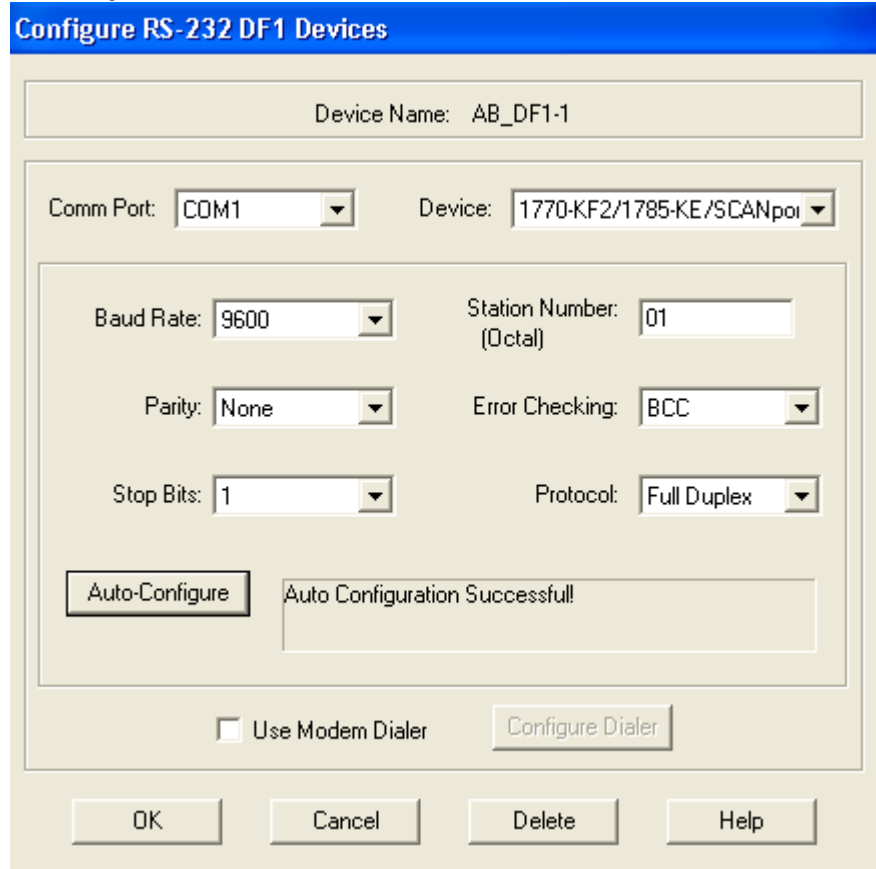
Type in any name or keep as default and hit OK



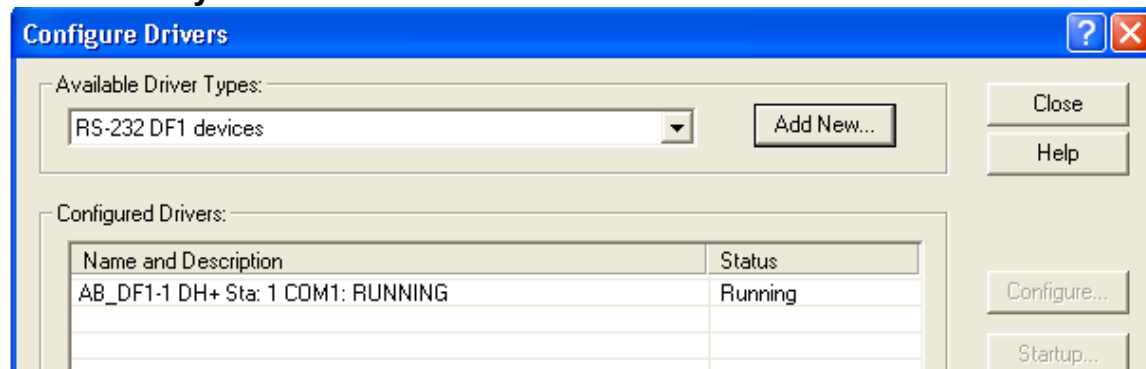
Ensure Com Port matches and select 1770-KF2 as the device and then click on Auto-Configure or enter matching Baud Rate, Error Checking, and Full Duplex (only option supported with current firmware release) and Click Ok.



Successful auto-configure will show as follows. Then click OK and RSLINX is setup.

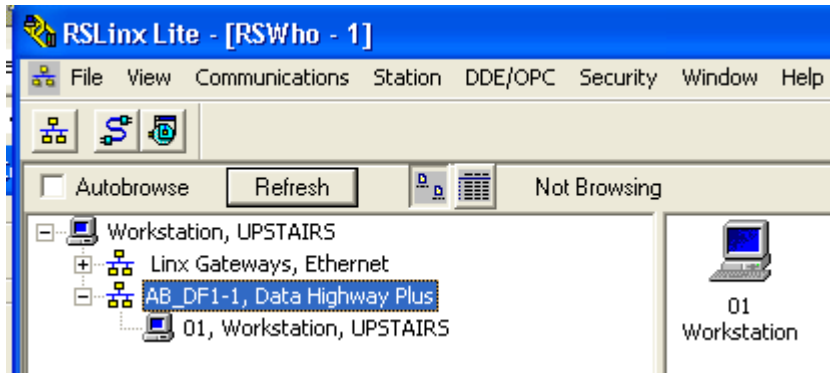


You will see your driver in the driver list:

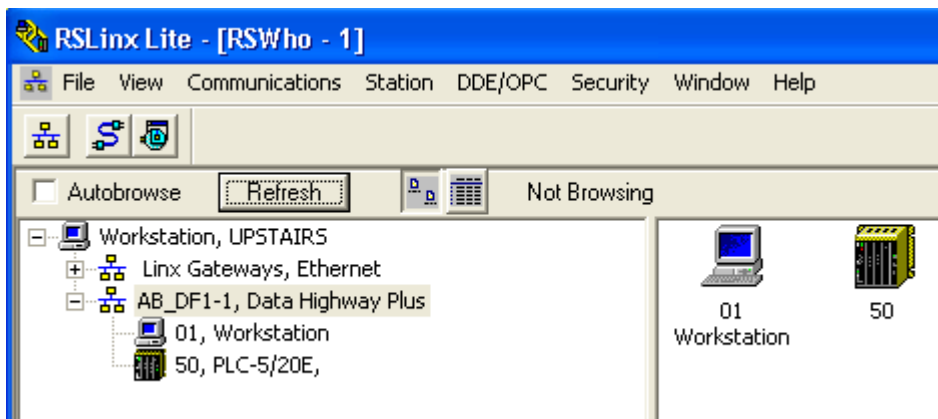


Click Close to get back to the main RSWho menu.

You can now verify your network connections by clicking on the + by your newly added driver and then select REFRESH button. Auto browse is not recommended as it continuously floods the DH+ with a message to every node regardless if they are present or not.



Your PLC should show up on the list of stations. The workstation is the address of the GW1000 on the DH+ Network.



Rev. 1.08