

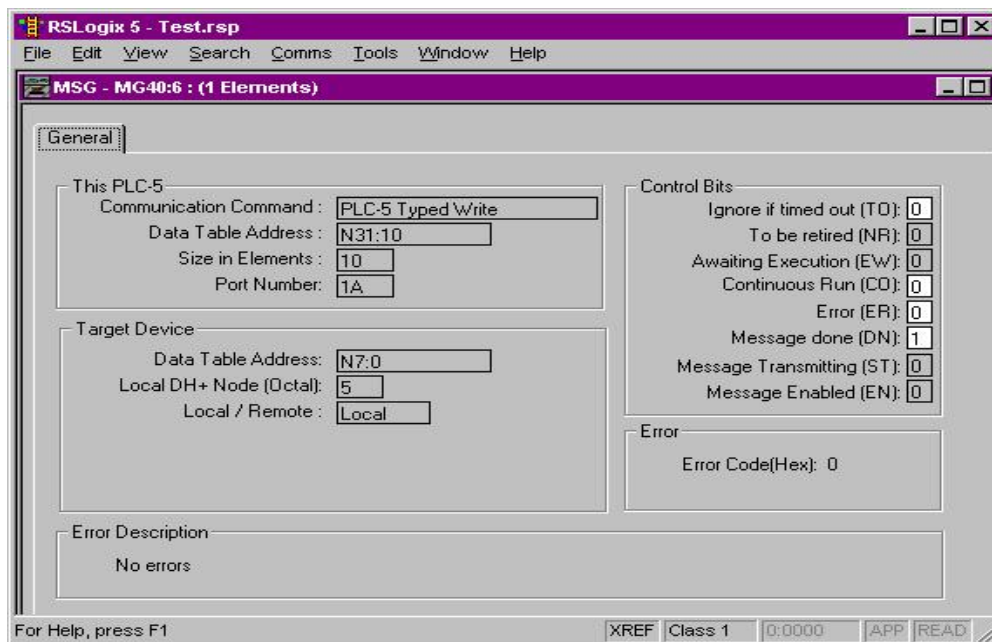
GW1000-DHPA: ASCII to DH+ Setup

The following is a brief description of the GW1000-DHPA – ASCII Printer to DH+ interface. Version 1.05 has ASCII printer mode enabled; future release will combine printer and scanner operation.

Additional information is available in the GW1000 User Manual at www.datalink-gateways.com or contact our Technical Support at (360) 306-5878 / (866) 709-6390.

Data from the PLC/SLC is written to the GW1000 using the PLC5 Type Write message instruction.

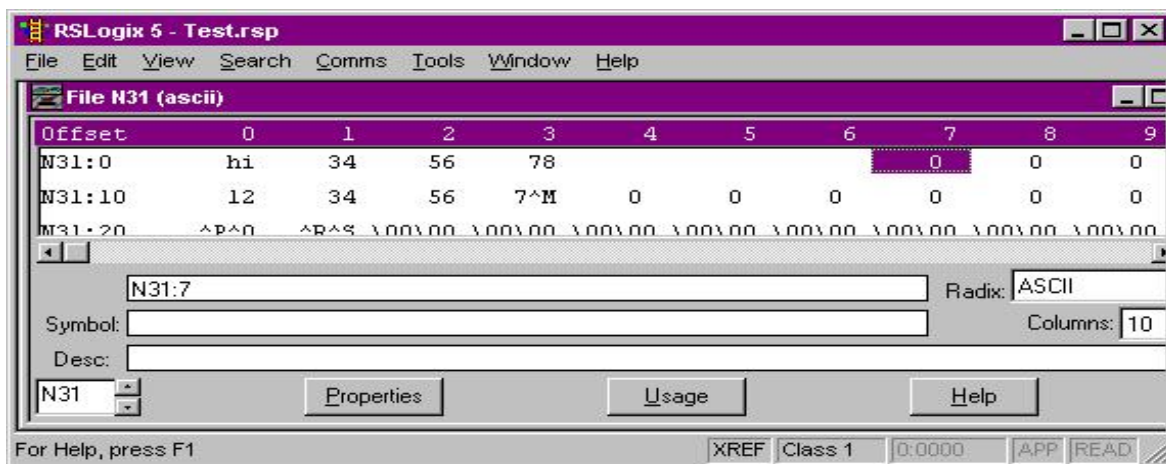
- 1) For the ASCII Transmitter to work a PLC5 Type Write MSG instruction must be set up in the PLC/SLC. The following shows how these are set up to communicate with the GW1000-DHPA at address 5.



Note:

- 1) N7:0 as the Data Table Address is always used. This number doesn't determine anything it is just a valid PLC address.
- 2) The Size in Elements is set to 10 words in my example, which will be 20 ASCII Characters. The GW1000-DHPA Version 1.05 will either transfer characters up to this count or until a **CR** is reached.
- 3) An **ASCII CR** has a value **0Dh** or if a N "Integer" file is viewed in ASCII it will resemble a **"^M"**.

The following shows what the file N31:10 looks like to output the string “1234567”<CR>



GW1000 Configuration Setup

Connect the GW1000 ethernet port to a switch or hub on the same network as your PC using a CAT5 network patch cord. Power on the GW1000 and wait 30 seconds for the bootup sequence to complete. Note the LAN **LINK** indicator LED should be on. From Windows, open a DOS command prompt window by clicking:

START → All Programs → Accessories → **Command Prompt**

At the command prompt, type:

telnet 192.168.1.111 10000 (ENTER↵)

This will bring up the login screen for configuration. (note: if you have changed the default IP address of the GW1000, enter the new address. If you do not know the IP address programmed into the GW1000, first restore factory defaults.)

```
Welcome to Gateway 1000 Interface Configuration Utility 1.0
Serial Number: A000800042
```

```
login:
```

Type in the default login and password as: “**Netsilicon**” and “**sysadm**” respectively. Please note the login is case-sensitive.



The following is the main menu:

```
Hello Netsilicon

DataLink GW1000-DHPA : DH+ to ASCII Interface
  Build : 0805.1.05
  Main Menu
  1.) Modify IP Parameters
  2.) Modify Password
  3.) View/Modify Online Parameters
  4.) Online Diagnostic Statistics
  5.) Save and Reboot
  6.) Quit without save

Enter Selection:
```

To access a menu item, press the corresponding number followed by ENTER↵.

1) Modify IP Parameters

To edit the IP Parameters, press “1” followed by ENTER↵. The following submenu is displayed.

```
Enter Selection: 1

  IP Parameters:
  1.) IP Address      192.168.1.111
  2.) Subnet Mask    255.255.255.0
  3.) Default Gateway 192.168.1.1
  4.) Main Menu
```

To edit the IP address, press “1” ENTER↵ followed by a new address and ENTER↵. Likewise, the Subnet Mask and Default Gateway can be set.

```
Enter Selection: 1
Enter IP address: 192.168.1.33
New IP address [192.168.1.33] accepted

  IP Parameters:
  1.) IP Address      192.168.1.111
  2.) Subnet Mask    255.255.255.0
  3.) Default Gateway 192.168.1.1
  4.) Main Menu

Enter Selection:
```

Note: The new parameters will be written to memory upon returning to the main menu by pressing 4 ENTER↵.

2) Modify Password

The login password can be modified with main menu option 2.

```
Enter Selection: 2
Enter old password: *****
Enter new password: *****
Renter new password: *****
New password accepted
```

3) View / Modify Online Parameters

To edit the Online Parameters for DH+ port and serial port, from the main menu, press “3” followed by ENTER.␣. The following submenu is displayed.

```
Enter Selection: 3

Online Parameters:
1.) Node Address      Oct: 1o, Hex:0x01, Dec: 1
2.) DH+ Baud Rate    57.6 KBaud
3.) Serial Parameters
4.) DF1 Parameters
5.) Save Parameters and Exit
6.) Return to Main Menu

Enter Selection:
```

NOTE: The DF1 parameters are not applicable to the GW1000-DHPA and will be changed in the menu to DHPA Parameters in the next release

To edit the DH+ node address, press “1” ENTER.␣, enter the two-digit octal value and press ENTER.␣.

```
Enter Selection: 1
Enter new DH+ Node address (Octal):
```

To edit the DH+ baud rate, press “2” ENTER.␣ and select a value and press ENTER.␣.

Enter Selection: 2

DH+ Speed: [57.6 KBaud]

- 1.) 57.6K Baud
- 2.) 115.2K Baud
- 3.) 230.4K Baud
- 4.) Autobaud Detection
- 5.) or <CR> Keep as Configured and Return to Online Parameters Menu

To edit the parameters for the serial port, press “3” ENTER.↓ and the following submenu is displayed. Each of the parameters can be changed with corresponding submenus. To save the serial settings, press “7” ENTER.↓.

Enter Selection: 3

Serial Parameters:

- 1.) Baud Rate 9600
- 2.) Parity NONE
- 3.) Data Bits 8
- 4.) Stop Bits 1
- 5.) Interface (RS232/422/485) RS232
- 6.) RS232 RTS/CTS Handshaking NONE
- 7.) Return to Online Parameters Menu

Enter Selection:

Note: To save the values and exit, press “5” from the Online Parameters menu: “Save Parameters and Exit.” Then press “5” from the Main Menu to “Save and Reboot” the GW1000-DHPA